

# QRN-1610S

16Ch Network Video Recorder with built-in PoE Switch

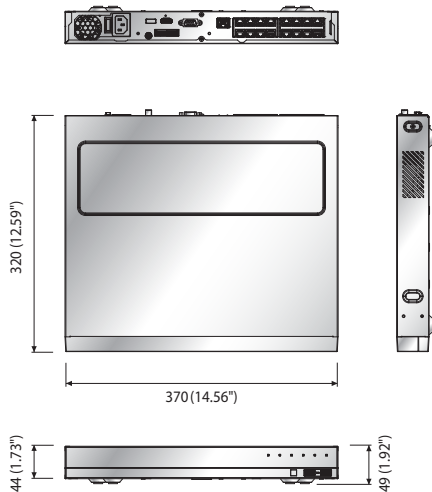


## Key Features

- Up to 16ch, 8-megapixel cameras supported
- H.265, H.264, MJPEG codec supported
- 128Mbps network camera recording
- Plug & play with 16 PoE ports
- Max. 2 HDDs supported
- HDMI / VGA local monitor
- P2P service (QR code connect) support

## Dimensions

Unit : mm (inch)



## QRN-1610S

<b>DISPLAY</b>		
Network Camera	Inputs	Max. 16ch
	Resolution	CIF ~ 8MP
	Protocols	Wisenet, ONVIF (Profile-S), RTSP
Live	Local Display	1x HDMI / 1x VGA
	Multi-Channel Display	[Local Monitor] 1 / 2H / 2V / 3V / 4 / 6 / 8 / 9 / 13 / 16 / Auto Sequence [Web] 1 / 4 / 9 / 16 / Auto Sequence
	Performance	[Local Monitor] 8MP (60fps) 5MP (90fps), 3MP (120fps), 2MP (240fps), 720p (480fps), D1 (480fps)
<b>PERFORMANCE</b>		
Operating System	Embedded	Linux
	Compression	H.265, H.264, MJPEG
	Recording Bandwidth	Max. 128Mbps
Record	Resolution	CIF ~ 8MP
	Type	Manual, Schedule (Continuous / Event), Event (Pre / Post)
	Event Trigger	Alarm Input (4), Video Loss, Camera event (Sensor, MD, Video analytics, Defocus)
	Event Action	e-Mail, PTZ Preset, Alarm Out, Buzzer, Monitor Out
	Playback Bandwidth	32Mbps (8ch simultaneously)
Search & Play	Performance	Max. 3 Users (Local 1, Remote 3)
	Mode	Date & Time (Calendar) / Event Log list / Text Search (POS) / ARB Search / Smart Search (Virtual Line w / direction, Enter / Exit)
	Simultaneous playback	Max. 8ch (Local), Max 16ch (Network)
	Resolution	CIF ~ 8MP
	Fish-Eye Dewarping	N/A (processed on Web / CMS)
Storage	Playback Control	Fast / Slow Forward / Backward, Move one step Up / Down
	Default Built-In	0 ~ 6TB
Backup	Internal	2 (Max. 12TB)
	File backup Function	BU / Exe (USB), JPG / AVI (Web, CMS)
Sensor	I/O	Multi channel (Up to 16ch) Play, Date-Time / Title display
	Input	4 / 2 (NO 1EA, NO / NC 1EA)
Audio	Compression	16 ch (network)
	Audio Communication	G.711, G.726, AAC (16 / 48KHz)
<b>NETWORK</b>		
Protocol	TCP / IP, UDP / IP, RTP (UDP), RTP (TCP), RTSP, NTP, HTTP, DHCP (Server, Client), PPPoE, SMTP, ICMP, IGMP, ARP, DNS, DDNS, uPnP, HTTPS, SNMP, ONVIF (Profile-S), SUNAPI (Server, Client)	
DDNS	Hanwha DDNS, 3rd party DDNS	
Transmission Bandwidth	128Mbps	
Max Remote Users	Search (3), Live Unicast (10), Multicast (20)	
IP Version	IPv4 / IPv6	
Security	User access Log, IP Filtering, 802.1x, Encryption	
Language	GUI	English, French, German, Italian, Spanish, Russian, Turkish, Polish, Dutch, Swedish, Czech, Portuguese, Danish, Rumanian, Serbian, Croatian, Hungarian, Greek, Norwegian, Finnish, Korean, Chinese (Simplified), Japanese, Thai
	Web	English, French, German, Italian, Spanish, Russian, Turkish, Polish, Dutch, Swedish, Czech, Portuguese, Danish, Rumanian, Serbian, Croatian, Hungarian, Greek, Norwegian, Finnish, Korean, Chinese (Simplified), Japanese, Thai
OS	Windows 7, 8, 10, Mac OS X 10.9, 10.10, 10.11	
Web Browser	Plug-in free web viewer : Google Chrome 47, MS Edge 20 Plug-in Webviewer : MS Explorer 11, Apple Safari 9 (Mac OS X only)	
Viewer Software	Type	SSM, Webviewer, Smart Viewer, Wisenet Mobile
	CMS Support	Support SDK / CGI (SUNAPI)
<b>FUNCTIONS</b>		
Camera Setup	Register	PnP, Manual
	Setup Items	IP address, Add profile edit, Bitrate, Compression, GOP, Quality, Camera MD setup, Camera video setup (Simple focus, Brightness / Contrast, Flip / Mirror, IRS, WDR, D&N, SSNR, Shutter, SSSDR, DIS), Fisheye Dewarping setup, Halfway View Setup, Camera Webpage
Camera Control	PoE	Monitor PoE Power consumption, On / Off Control for each PoE camera, Remote Reset for each PoE camera
Easy Configuration	Setup Wizard (Date / Time, Network, Auto Camera Configuration), P2P (QR code)	
ARB	Yes	
Smart phone	Control	Via GUI, Webviewer, 255 preset
	Support Model	iOS, Android
	Protocol Support	RTP, RTSP, HTTP, CGI (SUNAPI)
System Control	Control	Live (16ch) : Multi-Profile Support, Playback (4ch), Event push
	Max. Remote Users	Search (3), Live Unicast (10), Multicast (20)
	Mouse, Web, IR Remote control	
<b>INDICATOR / INTERFACE</b>		
Front	Indicator	LED (Status indicator) : 6ea HDD action 1, Alarm 1, Power 1, Record 1, Backup 1, Network 1
	VGA	1EA (1920x1080, 1280x720), supports Live, Playback, Setup,
	HDMI	1EA (3840 x 2160, 1920x1080, 1280x720), supports Live, Playback, Setup
Connectors	Audio	Out (1EA, RCA, Line)
	Ethernet	16EA (PoE, 100Mbps) 1EA (WAN, 1Gbps) - WAN : Uplink to CMS/LAN
	Alarm	In (4EA, Terminal Block) / Out (2EA, Terminal Block)
	USB	Front 2EA (USB2.0), Rear 1 (USB3.0)
	Ext. Storage	N/A
	Serial	N/A
	Reset	Switch (1EA)
Power Cord	Included	
<b>SYSTEM</b>		
Log	Log List	Max. 20000 (System Log, Event Log each)
<b>ENVIRONMENTAL</b>		
Operating Temperature / Humidity	+0°C to +40°C (+32°F to +104°F)	
Humidity	20% ~ 85% RH	
<b>ELECTRICAL</b>		
Power Input	100 to 240 VAC ±10%	
Power Consumption	Max. 158.2W (2HDDs, PoE on), Max. 34.6W (2HDDs, PoE off)	
PoE Budget	Max. 100W	
<b>MECHANICAL</b>		
Color / Material	Black / Metal	
Dimension (WxHxD)	W370.0 x H44.0 x D320 mm (1U) (14.56" x 1.73" x 12.59")	
Weight	2.79Kg (6.15 lb) (without HDD)	

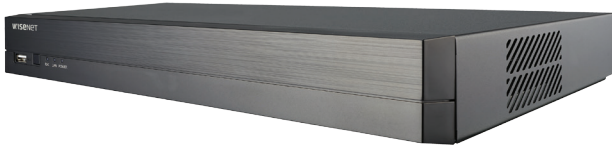
\* The latest product information / specification can be found at [hanwhasecurity.com](http://hanwhasecurity.com)

\* Design and specifications are subject to change without notice.

\* Wisenet is the proprietary brand of Hanwha Techwin

# QRN-810S

8Ch Network Video Recorder with built-in PoE Switch

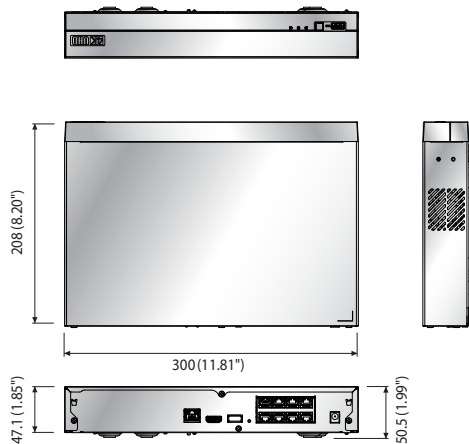


## Key Features

- Up to 8ch, 8-megapixel cameras supported
- H.265, H.264, MJPEG codec supported
- 80Mbps network camera recording
- Plug & play with 8 PoE ports
- Max. 1 HDD supported
- HDMI local monitor
- P2P service (QR code connect) support

## Dimensions

Unit : mm (inch)



## QRN-810S

<b>DISPLAY</b>		
Network Camera	Inputs	Max. 8ch
	Resolution	CIF ~ 8MP
	Protocols	Wisenet, ONVIF (Profile-S), RTSP
Live	Local Display	1x HDMI
	Multi-Channel Display	[Local Monitor] 1 / 2H / 2V / 3V / 4 / 6 / 8 / Auto Sequence [Web] 1 / 4 / 8 / Auto Sequence
	Performance	[Local Monitor] 8MP (60fps) 5MP (90fps), 3MP (120fps), 2MP (240fps), 720p (240fps), D1 (240fps)
<b>PERFORMANCE</b>		
Operating System	Embedded	Linux
	Compression	H.265, H.264, MJPEG
	Recording Bandwidth	Max. 80Mbps
Record	Resolution	CIF ~ 8MP
	Type	Manual, Schedule (Continuous / Event), Event (Pre / Post)
	Event Trigger	Video Loss, Camera event (Sensor, MD, Video analytics, Defocus)
	Event Action	e-Mail, PTZ Preset, Buzzer, Monitor Out
Search & Play	Playback Bandwidth	32Mbps (8ch simultaneously)
	Performance	Max. 3 Users (Local 1, Remote 3)
	Mode	Date & Time (Calendar), Event Log list, Text Search (POS), ARB Search, Smart Search (Virtual Line w / direction, Enter / Exit)
	Simultaneous playback	Max. 8ch (Local, Network)
Storage	Resolution	CIF ~ 8MP
	Fish-Eye Dewarping	N/A (processed on Web / CMS)
	Playback Control	Fast / Slow Forward / Backward, Move one step Up / Down
Backup	Default Built-In	0 ~ 6TB
	Internal	1 (Max.6TB)
Sensor	File backup	BU / Exe (USB), JPG / AVI (Web, CMS)
	Function	Multi channel (Up to 8ch) Play, Date-Time / Title display
Audio	I/O	N/A
	Input	8 ch (network)
	Compression	G.711, G.726, AAC (16 / 48KHz)
	Audio Communication	2-Way
<b>NETWORK</b>		
Protocol		TCP / IP, UDP / IP, RTP (UDP), RTP (TCP), RTSP, NTP, HTTP, DHCP (Server, Client), PPPoE, SMTP, ICMP, IGMP, ARP, DNS, DDNS, uPnP, HTTPS, SNMP, ONVIF (Profile-S), SUNAPI (Server, Client)
DDNS		Hanwha Security DDNS
Transmission Bandwidth		80Mbps
Max Remote Users		Search (3), Live Unicast (10), Multicast (20)
IP Version		IPv4 / IPv6
Security		User access Log, IP Filtering, 802.1x, Encryption
Language	GUI	English, French, German, Italian, Spanish, Russian, Turkish, Polish, Dutch, Swedish, Czech, Portuguese, Danish, Rumanian, Serbian, Croatian, Hungarian, Greek, Norwegian, Finnish, Korean, Chinese (Simplified), Japanese, Thai
	Web	English, French, German, Italian, Spanish, Russian, Turkish, Polish, Dutch, Swedish, Czech, Portuguese, Danish, Rumanian, Serbian, Croatian, Hungarian, Greek, Norwegian, Finnish, Korean, Chinese (Simplified), Japanese, Thai
OS		Windows 7, 8, 10, Mac OS X 10.9, 10.10, 10.11
Web Browser		Plug-in free web viewer : Google Chrome 47, MS Edge 20 Plug-in Webviewer : MS Explorer 11, Apple Safari 9 (Mac OS X only)
Viewer Software	Type	Wisenet WAVE, SSM, Webviewer, Smart Viewer, Wisenet Mobile viewer
	CMS Support	Support SDK / CGI (SUNAPI)
<b>FUNCTIONS</b>		
Camera Setup	Register	PnP, Manual
	Setup Items	IP address, Add profile edit, Bitrate, Compression, GOP, Quality, Camera MD setup, Camera video setup (Simple focus, Brightness / Contrast, Flip / Mirror, IRIS, WDR, D&N, SSM, Shutter, SSMR, DIS), Fisheye Dewarping setup, Hallway View Setup, Camera Webpage
Camera Control	PoE	Monitor PoE Power consumption, On / Off Control for each PoE camera, Remote Reset for each PoE camera
Easy Configuration		Setup Wizard (Date / Time, Network, Auto Camera Configuration) P2P (QR code)
ARB		Yes
PTZ	Control	Via GUI, Webviewer, 255 preset
Smart phone	Support Model	iOS, Android
	Protocol Support	RTP, RTSP, HTTP, CGI (SUNAPI)
	Control	Live (8ch) : Multi-Profile Support, Playback (4ch), Event push
	Max. Remote Users	Search (3), Live Unicast (10), Multicast (20)
System Control		Mouse, Web, IR Remote control
<b>INDICATOR / INTERFACE</b>		
Front	Indicator	LED (Status indicator) : 3ea Power Status 1, LAN 1, Record 1
	VGA	N/A
	HDMI	1 EA (3840 x 2160, 1920 x 1080, 1280 x 720)
Connectors	Audio	N/A
	Ethernet	8EA (PoE, 100Mbps) 1EA (WAN, 1Gbps) - WAN : Uplink to CMS/LAN
	Alarm	N/A
	USB	Front 1EA (USB2.0), Rear 1 (USB3.0)
	Ext. Storage	N/A
Serial	N/A	
Reset	Switch (1EA)	
Power Cord	Included	
<b>SYSTEM</b>		
Log	Log List	Max. 20000 (System Log, Event Log each)
<b>ENVIRONMENTAL</b>		
Operating Temperature / Humidity		+0°C to +40°C (+32°F to +104°F)
Humidity		20% ~ 85% RH
<b>ELECTRICAL</b>		
Power Input		54VDC / 1.67A
Power Consumption		Max. 76.2W (1HDD, PoE on), Max. 8.1W (1HDD, PoE off)
PoE Budget		Max. 50W
<b>MECHANICAL</b>		
Color / Material		Black / Metal
Dimension (WxHxD)		W300.0 x H47.1 x D208.4 mm (1U) (11.81" x 1.85" x 8.20")
Weight		1.01Kg (2.22 lb) (without HDD)

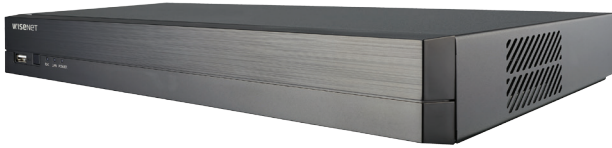
\* The latest product information / specification can be found at [hanwhasecurity.com](http://hanwhasecurity.com)

\* Design and specifications are subject to change without notice.

\* Wisenet is the proprietary brand of Hanwha Techwin

# QRN-410S

4Ch Network Video Recorder with built-in PoE Switch

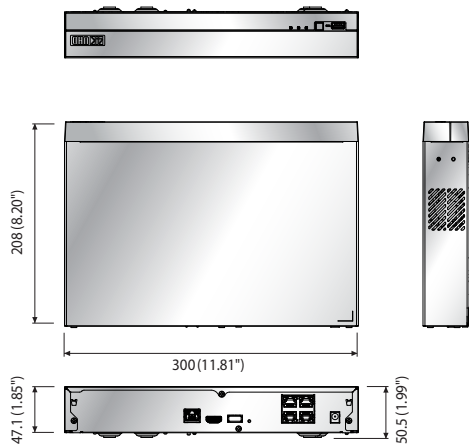


## Key Features

- Up to 4ch, 8-megapixel cameras supported
- H.265, H.264, MJPEG codec supported
- 40Mbps network camera recording
- Plug & play with 4 PoE ports
- Max. 1 HDD supported
- HDMI local monitor
- P2P service (QR code connect) support

## Dimensions

Unit : mm (inch)



## QRN-410S

<b>DISPLAY</b>		
Network Camera	Inputs	Max. 4ch
	Resolution	CIF ~ 8MP
	Protocols	Wisenet, ONVIF (Profile-S), RTSP
Live	Local Display	1x HDMI
	Multi-Channel Display	[Local Monitor] 1 / 2H / 2V / 3V / 4 / Auto Sequence [Web] 1 / 4 / Auto Sequence
	Performance	[Local Monitor] 8MP (60fps) 5MP (90fps), 3MP (120fps), 2MP (120fps), 720p (120fps), D1 (120fps)
<b>PERFORMANCE</b>		
Operating System	Embedded	Linux
	Compression	H.265, H.264, MJPEG
	Recording Bandwidth	Max. 40Mbps
Record	Resolution	CIF ~ 8MP
	Type	Manual, Schedule (Continuous / Event), Event (Pre / Post)
	Event Trigger	Video Loss, Camera event (Sensor, MD, Video analytics, Defocus)
	Event Action	e-Mail, PTZ Preset, Buzzer, Monitor Out
	Playback Bandwidth	32Mbps (4ch simultaneously)
Search & Play	Performance	Max. 3 Users (Local 1, Remote 3)
	Mode	Date & Time (Calendar) / Event Log list / Text Search (POS) / ARB Search / Smart Search (Virtual Line w / direction, Enter / Exit)
	Simultaneous playback	Max. 4ch (Local, Network)
	Resolution	CIF ~ 8MP
	Fish-Eye Dewarping	N/A (processed on Web / CMS)
Storage	Playback Control	Fast / Slow Forward / Backward, Move one step Up / Down
	Default Built-In	0 ~ 6TB
Backup	Internal	1 (Max.6TB)
	File backup Function	BU / Exe (USB), JPG / AVI (Web, CMS)
Sensor	I/O	Multi channel (Upto 4ch) Play, Date-Time / Title display
	Function	N/A
Audio	Input	4 ch (network)
	Compression	G.711, G.726, AAC (16 / 48KHz)
	Audio Communication	2-Way
<b>NETWORK</b>		
Protocol		TCP / IP, UDP / IP, RTP (UDP), RTP (TCP), RTSP, NTP, HTTP, DHCP (Server, Client), PPPoE, SMTP, ICMP, IGMP, ARP, DNS, DDNS, uPnP, HTTPS, SNMP, ONVIF (Profile-S), SUNAPI (Server, Client)
DDNS		Hanwha DDNS, 3rd party DDNS
Transmission Bandwidth		50Mbps
Max Remote Users		Search (3), Live Unicast (10), Multicast (20)
IP Version		IPv4 / IPv6
Security		User access Log, IP Filtering, 802.1x, Encryption
Language	GUI	English, French, German, Italian, Spanish, Russian, Turkish, Polish, Dutch, Swedish, Czech, Portuguese, Danish, Rumanian, Serbian, Croatian, Hungarian, Greek, Norwegian, Finnish, Korean, Chinese (Simplified), Japanese, Thai
	Web	English, French, German, Italian, Spanish, Russian, Turkish, Polish, Dutch, Swedish, Czech, Portuguese, Danish, Rumanian, Serbian, Croatian, Hungarian, Greek, Norwegian, Finnish, Korean, Chinese (Simplified), Japanese, Thai
OS		Windows 7, 8, 10, Mac OS X 10.9, 10.10, 10.11
Web Browser		Plug-in free web viewer : Google Chrome 47, MS Edge 20 Plug-in Webviewer : MS Explorer 11, Apple Safari 9 (Mac OS X only)
Viewer Software	Type	Wisenet Wave, SSM, Webviewer, Smart Viewer, Wisenet Mobile viewer
Software	CMS Support	Support SDK / CGI (SUNAPI)
<b>FUNCTIONS</b>		
Camera Setup	Register	PnP, Manual
	Setup Items	IP address, Add profile edit, Bitrate, Compression, GOP, Quality, Camera MD setup, Camera video setup (Simple focus, Brightness / Contrast, Flip / Mirror, IRIS, WDR, D&N, SSNR, Shutter, SDDR, DIS), Fisheye Dewarping setup, Hallway View Setup, Camera Webpage
Camera Control	PoE	Monitor PoE Power consumption, On / Off Control for each PoE camera, Remote Reset for each PoE camera
Easy Configuration		Setup Wizard (Date / Time, Network, Auto Camera Configuration) P2P (QR code)
ARB		Yes
PTZ	Control	Via GUI, Webviewer, 255 preset
Smart phone	Support Model	iOS, Android
	Protocol Support	RTP, RTSP, HTTP, CGI (SUNAPI)
	Control	Live (4ch) : Multi-Profile Support, Playback (4ch), Event push
Max. Remote Users		Search (3), Live Unicast (10), Multicast (20)
System Control		Mouse, Web
<b>INDICATOR / INTERFACE</b>		
Front	Indicator	LED (Status indicator) : 3ea Power Status 1, LAN 1, Record 1
	VGA	N/A
	HDMI	1 EA (3840 x 2160, 1920x1080, 1280x720)
Connectors	Audio	N/A
	Ethernet	4EA (PoE, 100Mbps) 1EA (WAN, 100Mbps) - WAN : Uplink to CMS/LAN
	Alarm	N/A
	USB	Front 1EA (USB2.0), Rear 1 (USB3.0)
	Ext. Storage	N/A
Serial		N/A
Reset		Switch (1EA)
Power Cord		Included
<b>SYSTEM</b>		
Log	Log List	Max. 20000 (System Log, Event Log each)
<b>ENVIRONMENTAL</b>		
Operating Temperature / Humidity		+0°C to +40°C (+32°F to +104°F)
Humidity		20% ~ 85% RH
<b>ELECTRICAL</b>		
Power Input		54VDC / 1.2A
Power Consumption		Max. 47W (1HDD, PoE on), Max. 7.4W (1HDD, PoE off)
PoE Budget		Max. 25W
<b>MECHANICAL</b>		
Color / Material		Black / Metal
Dimension (WxHxD)		W300.0 x H47.1 x D208.4 mm (1U) (11.81" x 1.85" x 8.20")
Weight		0.99Kg (2.18 lb) (without HDD)

\* The latest product information / specification can be found at [hanwhasecurity.com](http://hanwhasecurity.com)

\* Design and specifications are subject to change without notice.

\* Wisenet is the proprietary brand of Hanwha Techwin